

SW Corridor Equity Coalition (SWEC)

Nuhamin Eiden
SW Corridor Equity Coalition Manager
Unite Oregon



Where is the SW Corridor



Photo courtesy of Oregon Metro

The Southwest Corridor comprises multiple jurisdictions and many different neighborhoods, extending from South Downtown Portland along the Barbur Boulevard corridor to Downtown Tigard and further south along I-5 to Bridgeport Village.

What Is Happening in the SW Corridor

- Proposed investment of a 12 mile Light Rail MAX extension meant to serve one of the fastest growing corridors in the Metro Region.
- The Southwest Corridor Equitable Development Strategy was created to address this major public investment.
- The Strategy envisions a livable, affordable, economically thriving community with reliable and safe transportation options for every resident and commuter.
- Past transportation - related development projects have resulted in involuntary residential and business displacement of BIPOC communities, making a lasting impact on Portland's Black community in North and Northeast Portland.

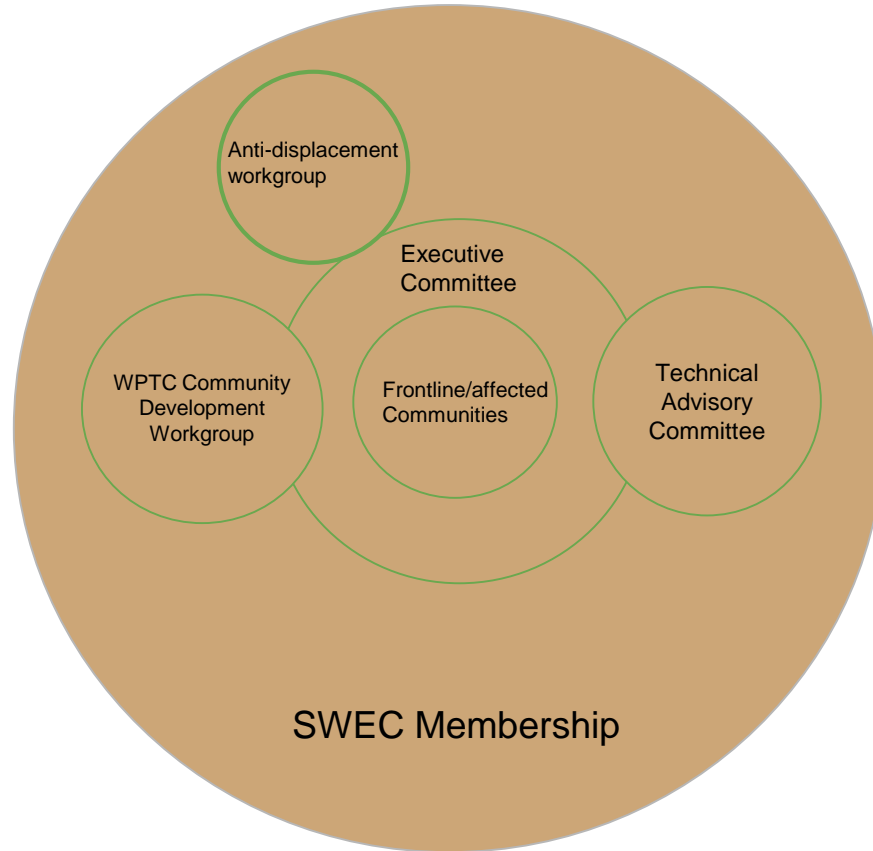
What is the SW Corridor Equity Coalition?

- The SW Corridor Equity Coalition is:
 - a coordinated effort between community organizations, residents, businesses, philanthropic partners, and state and local government bodies
 - advocate for and to resource equitable development practices in the SW Corridor
 - works together to implement the SW Corridor Equitable Development Strategy.
- This coalition is committed to disrupting similar outcomes in the future by ensuring racial equity commitments are resourced, decision making bodies are held accountable by coalition members and their partners, and all decisions are community-driven.

Equity Commitment

- Prioritize racial equity
- Implement community-centered decision-making processes
- Ensure the affordable housing needs are met
- Create a clear path for the community to participate
- Strive to prevent any involuntary residential or business displacement
- Uphold transparency
- Invest in leadership development

Coalition Structure



Why an Equity Coalition?

- Ensure the work is led by frontline communities
- Share resources
- Prevent recreating the wheel
- Coordinate to avoid double work
- Promote transparency and accountability

Strategy

- Identify front line communities
- Center the work on those communities through resourcing community based and direct service organizations that are organizing within affected communities
- Organize around key issues through workgroups and committees
- Create a centralized system of information sharing
- Hold space where all stakeholders convene regularly to discuss

Equity Statement

We affirm that racial equity – an understanding and acknowledgment of historical and ongoing racial inequities and a commitment to actions challenging those inequities – is a core tenet of our coalition's practice.

General SWEC Membership

APANO

City of Portland - BPS

City of Tigard

Community Alliance of Tenants (CAT)

Community Partners for Affordable Housing (CPAH)

Craft3

HAKI Community Organization

Home Forward

**Immigrant and Refugee Community Organization
(IRCO)**

Metro Regional Government

Multnomah County Health Department

Neighborhood House + Hillsdale Neighborhood

NOAH

O'Neill Construction Group

Oregon Health and Science University (OHSU)

Proud Ground

REACH CDC

Southwest Neighborhoods, Inc. (SWNI)

TriMet

Unite Oregon

Verde NW

Washington County Department of Housing Services

WorkSystems Inc.

Executive Committee

- APANO
- Community Alliance of Tenants (CAT)
- HAKI Community Organization
- Unite Oregon

The Executive Committee will be charged with making decisions on behalf of the Coalition, including, but not limited to:

- Position on newly proposed public policy changes
- Support for proposed public and private development within the SW Corridor
- Rolling admission of new members joining the coalition
- Relationship between executive committee and general membership
- Offering stipends for participation by community members
- Provide policy recommendations and reports to governing bodies
- Ensuring appropriate and sufficient representation of diverse members within the coalition

Decision making Process

The executive committee makes decisions on behalf of the coalition using an equitable decision-making model. We implement this through:

- Inclusive decision making process that focuses on racial justice
- Promoting accessibility and fairness in procedure
 - Providing access and adequate time to all committee members to review all relevant documents
 - Accommodate member's accessibility needs when necessary
- A decision can be made even when there is disagreement among members.
 - Dissenting members not under obligation to officially sign off, but will make every effort not to lobby against the Coalition's position

Supportive Committees and Workgroups

- Charter Committee
- Anti-Displacement Workgroup
- Technical Advisory Committee*
- WPTC Community Development Workgroup

*currently accepting recommendations

How to Get Involved

Join us! Email Nuhamin@uniteoregon.org to sign up for our quarterly newsletter and find out ways to be involved.

We are seeking members who represent:

- SW Corridor residents
- SW Corridor businesses
- organizations/associations that have presence in the SW Corridor

Together, we will advance SWEC's equity commitments and work together toward an equitable future for all.