

Bus Operator Restrooms

Improving the availability and quality of restroom facilities for TriMet operators is a fundamental commitment of the agency, and supports TriMet's culture of safety and security.

Call for Action

- **Creation of Operator Restroom Committee - a Continuous Improvement Team formed in 2013.**
- **Implementation of security and facility upgrades at select locations in the district.**
- **Analyze and identify priorities for future restroom projects.**
 - **Many needs – where to focus.**
 - **Match the scale to the need**

Restroom Committee

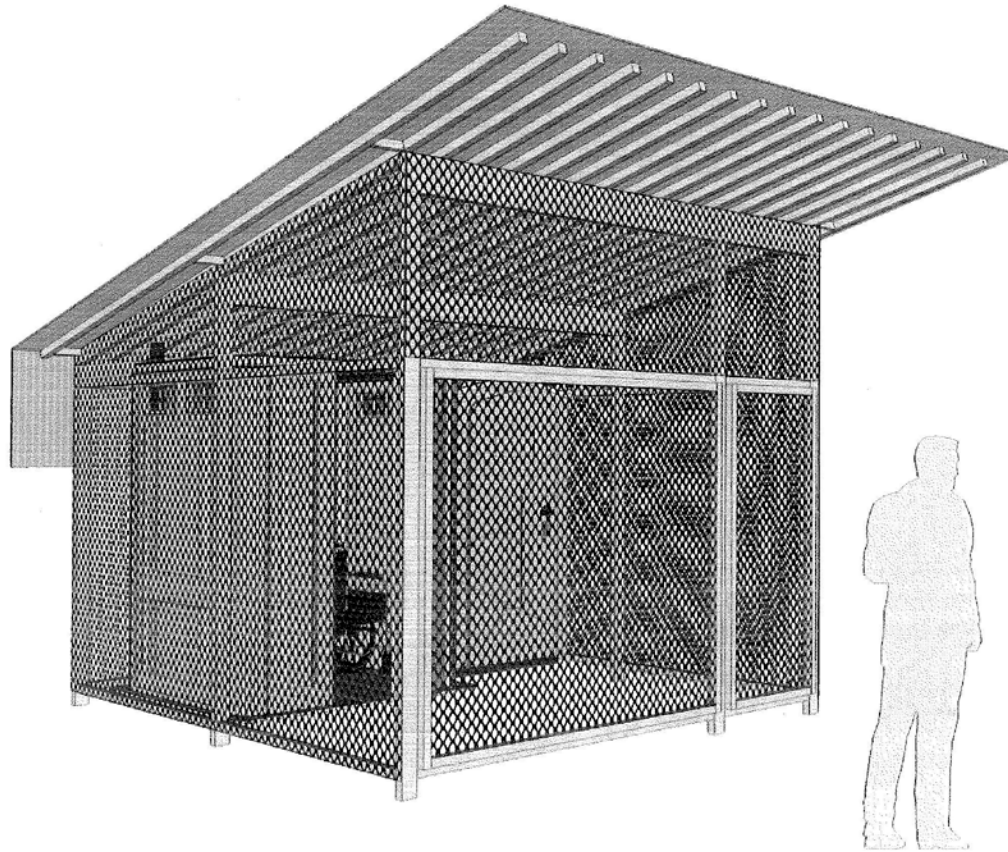
Includes:

- **Operators**
- **Facilities**
- **Safety & Security**
- **Field Operations**
- **Garage Transportation staff**
- **Capital Projects**
- **Planning & Policy**

Implementation

- **Security upgrades complete.**
 - **Mohawk Park & Ride**
 - **Sauvie Island**
 - **SW Barbur & Bertha (Burlingame)**
 - **SE 92nd & Flavel (early 2016)**
- **Relocate Line 8 layover location.**
- **Downtown Milwaukie accommodations for all operating hours.**

TRIMET FLAVEL RESTROOMS



SE Holgate & 134th Ave (former)



SE Holgate & 134th Ave (current)



Mohawk Park & Ride



Assess Needs

Priority matrix;
score & rank
facilities.

Operators/week	Facility	Weighted importance		Index Score
		30% Operator traffic (buses/wk)	70% Facility Environment, Perceived Security	
		<250 = 1	very good=1	
		250-499 = 2	good=2	
		500-749 = 3	ok=3	
		750-999 = 4	poor=4	
		>1,000/wk = 5	very poor=5	
715	Pier Park	3	5	4.4
365	PORTABLE (Flavel)	2	5	4.1
780	Oregon City TC	4	4	4.0
812	Hollywood TC (portable)	2	4	3.4
369	Housing Authority of Portland (Saratoga)	2	4	3.4
827	Safeway (St Johns)	4	3	3.3

Continuous Improvement

Future priorities established.

Remove all non-essential portables; secure remaining.

Partner with providers to improve facilities.

Create guidelines that help scale investments to needs.

Next steps

Late 2015: Complete Annual Restroom Plan.

2016: Focus review on longer bus lines to make certain sufficient mid-route are facilities are available.

FY16 – FY19: Use Priority Matrix to continue implementing facility upgrades. Update Plan periodically to recognize changed circumstances.